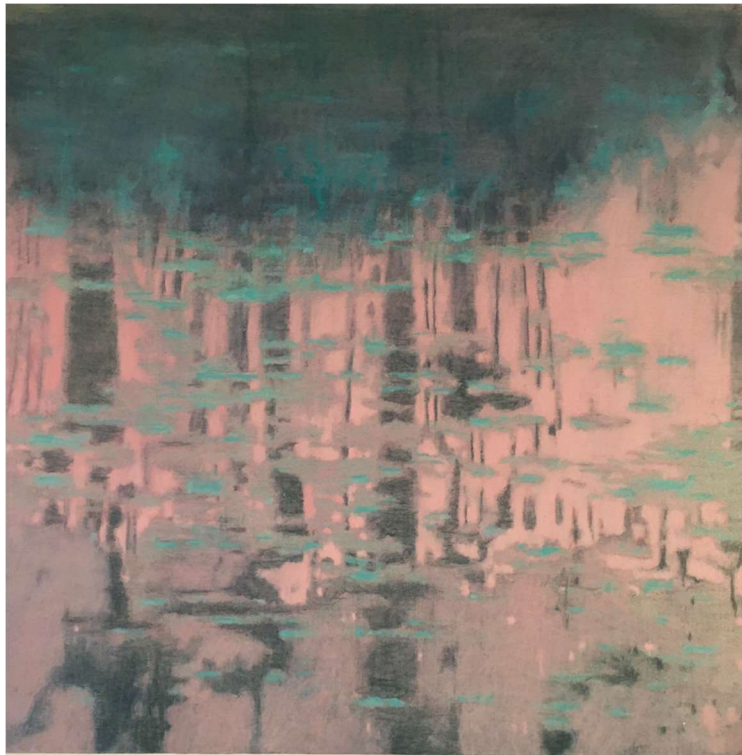


Herman Lohe,
Swedish, B. 1967



"All of my art is really about conveying emotions. It can be a landscape painting or a video installation but basically it is about how to touch upon the eternal questions of joy, sorrow, life and death. It is about one's existence and the basic needs. It is also about our primary emotional connection to the natural world, nature and our surroundings. Through my art, I try to convey these emotions.

The viewer is an equally important part of the artwork as the actual content of the work itself. Both feed from each other and it's within that connection that something sacred could happen, a highly personal experience between the viewer and the piece of work.

FIUMANO CLASE

The creative process is about making decisions and in a way also to take a stand where each brush stroke is equally important, where every layer of paint and touch must have a nerve. Material handling of whatever medium is as important as the motives." – Herman Lohe, 2017

Education

- 2010 Digital printing DPC Mitthögskolan, Sweden
- 2004 Media Producing: Targeting Arts and Media, Örnsköldsvik, Sweden
- 2001 Gävle Art School, Sweden

Selected Awards

- 2007 Göran Dahlberg Scholarship for visual arts
- 2007 'Sparbanken' Foundation Art Scholarship

Public Collections

- Sollefteå Municipality, Sweden
- Härnösand Municipality, Sweden
- Örnsköldsvik Municipality, Sweden
- Västerbotten County Council, Sweden
- Västernorrland County Council, Sweden
- Umeå Municipality, Sweden
- Sundsvall County Hospital, Sweden
- Werfenweng Sculpture Park, Austria

Projects

- 2010-ongoing Getberg Schule, Austria
- 2009 "To Landscape" Austrian-Swedish Exchange
- 2008 Initiator and coordinator "The Graphics Biennial 5+5"

Selected Solo Exhibitions

- 2019 Fiumano Clase, London, UK
- 2015 Second floor Gallery, Sweden
- 2012 Brynge Art Gallery, Sweden
- 2011 Sollefteå Art Gallery, Sweden
- 2011 Gallery VOX, Sweden
- 2006 Örnsköldsvik Museum and Art Gallery
- 2006 Gallery 1 Sweden
- 2005 Härnösand Museum and Art Gallery, Sweden
- 2001 Gallery K, Gävle, Sweden
- 2000 Hällefors Art Gallery, Sweden

FIUMANO CLASE

Selected Group Exhibitions

- 2018 "Sweep - Landskip" - An exhibition of international artists whose works use landscape as a concept. Kinokino, Sandnes, Norway
- 2018 With Fiumano Clase at Art Central, Hong Kong
- 2017 Wassall & Lohe, Fiumano Clase, London
- 2016 Before and After, Orion Contemporary, London
- 2015 Murberget County Museum and Art Gallery, Sweden
- 2011 University of Applied Arts, Vienna, Austria
- 2010 Örnköldsvik Museum and Art Gallery, Sweden
- 2009 Kramfors Art Gallery, Sweden
- 2007 Hangar Project, Sweden
- 2007 Y salon, Sweden
- 2003 Town Hall, Örnköldsvik, Sweden
- 2001 Hälsingland Museum, Sweden