

## remiQXing still

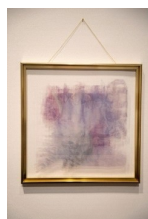
Libby Heaney

16 September – 16 October 2022

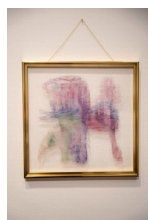
### South Gallery



*Bear twin worm tentacle (quantum hybrid), 2022*  
C-type print of scanned watercolour painting  
manipulated by bespoke quantum computer code on  
clear acrylic with gold aluminium frame  
38 x 38 cm  
15 x 15 in



*Bat hand blob wing (quantum hybrid), 2022*  
C-type print of scanned watercolour painting  
manipulated by bespoke quantum computer code on  
clear acrylic with gold aluminium frame  
38 x 38 cm  
15 x 15 in



*Pink slime mould hand (quantum hybrid), 2022*  
C-type print of scanned watercolour painting  
manipulated by bespoke quantum computer code on  
clear acrylic with gold aluminium frame  
38 x 38 cm  
15 x 15 in



*and it oozed out the machine, 2022*  
Hard-sculpted Glass  
27 x 12 x 25.5 cm  
10 5/8 x 4 3/4 x 10 in

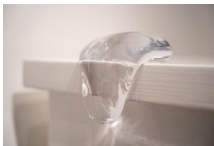


*Mucus unfurling, 2022*  
Hard-sculpted Glass  
6.5 x 8.5 x 10 cm  
2 1/2 x 3 3/8 x 4 in

# FIUMANOCCLASE



*Better luck next slime, 2022*  
Hard-sculpted Glass  
11 x 9 x 9 cm  
4 3/8 x 3 1/2 x 3 1/2 in



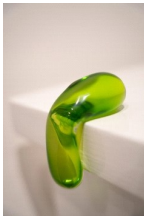
*Slime flies when you're having fun, 2022*  
Hard-sculpted Glass  
9 x 9 x 9 cm  
3 1/2 x 3 1/2 x 3 1/2 in



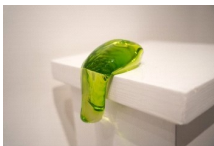
*ENTANGLE!!, 2022*  
C-type print with glitches created by bespoke quantum computer code on gold coloured Dibond aluminium  
40 x 60 cm  
15 3/4 x 23 5/8 in



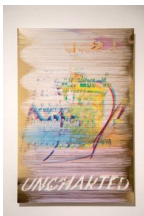
*Potential - light, 2022*  
C-type print with glitches created by bespoke quantum computer code on gold coloured Dibond aluminium  
150 x 100 cm  
59 x 39 3/8 in



*Kin slime, 2022*  
Hard-sculpted Glass  
6.5 x 3.5 x 8 cm  
2 1/2 x 1 3/8 x 3 1/8 in



*Cosmic killer slime, 2022*  
Hard-sculpted Glass  
10 x 7 x 10 cm  
4 x 2 3/4 x 4 in



*UNCHARTED, 2022*  
C-type print with glitches created by bespoke quantum computer code on gold coloured Dibond aluminium  
60 x 40 cm  
23 5/8 x 15 3/4 in

# FIUMANOCCLASE



*Potential - dark, 2022*

C-type print with glitches created by bespoke quantum computer code on gold coloured Dibond aluminium  
150 x 120 cm  
59 x 47 1/4 in



*Jekyll & Slime, 2022*

Hard-sculpted glass  
11 x 8.5 x 11 cm  
4 3/8 x 3 3/8 x 4 3/8 in



*Slime teetering on the edge between life and death, 2022*

Hard-sculpted Glass  
Small: 7.5 x 3.5 x 6.5 cm

Large 10 x 21.5 x 15 cm

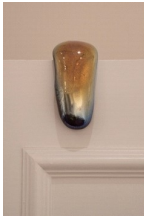


*Omnipresent slime, 2022*

Hard-sculpted glass  
15 x 7 x 14 cm  
5 7/8 x 2 3/4 x 5 1/2 in

# FIUMANOCCLASE

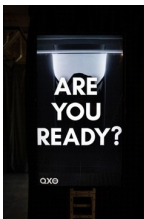
## Foyer



*Slime matters, 2022*  
Hard-sculpted Glass  
14 x 7.5 x 13.5 cm  
5 1/2 x 3 x 5 1/4 in



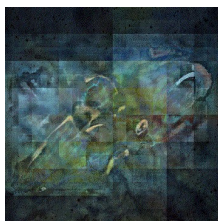
*Primordial slime, 2022*  
Hard-sculpted Glass  
Small: 7 x 4 x 7cm  
  
Large: 13 x 9 x 8 cm



*QX Extended Advertisement, 2022*  
5m57s single channel vertical video, no sound  
Variable  
Edition of 5 + 1AP & 1EP

# FIUMANOCCLASE

## Long Gallery



*Cephalopod Alien - quantum deconstruction*, 2022  
c-type print on Fuji gloss  
30 x 30 cm  
11 3/4 x 11 3/4 in  
Edition of 10 + 2APs



*The slime has come*, 2022  
Hard-sculpted Glass  
28 x 20 x 20 cm  
11 x 7 7/8 x 7 7/8 in



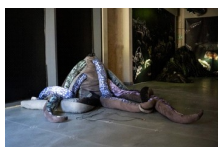
*Sticky entanglements*, 2022  
Hard-sculpted Glass  
Small: 8 x 5.5 x 8 cm  
Large 7 x 6.5 x 8 cm



*Jellyfish out of water*, 2022  
Hard-sculpted Glass  
8 x 8.5 x 12 cm  
3 1/8 x 3 3/8 x 4 3/4 in



*QX Product Launch*, 2022  
4m30s single channel video with sound.  
Variable  
Edition of 5 + 1AP & 1EP



*Tentacle Tangle*, 2022  
Sculptural seating  
Suede, velvet, c-type printed satin  
Each tentacle is 3m, 7 tentacles and a 1m central core  
Edition of 3 plus 1AP & 1 EP